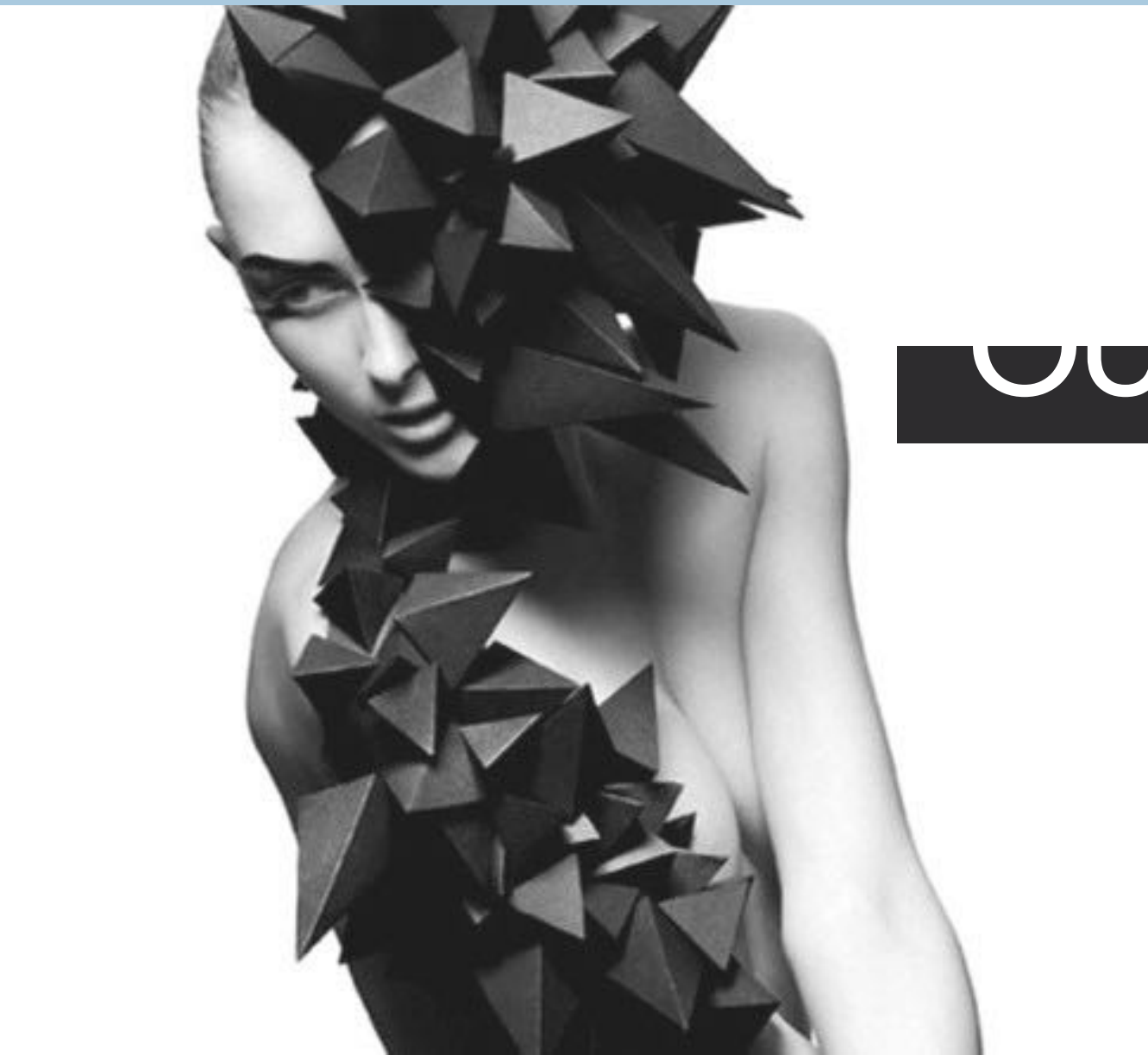


GEOMETRY IN FASHION

STEFANIA COLOSIMO



SEPTEMBER 2017/18



OUTLINE

Setting

Map

Solids in Fashion

Theme

Four c

Exemple

Task

SETTING



Istituto di Istruzione Superiore "Leonardo da Vinci - Ripamonti"

via Belvedere, 18 – 22100 Como - tel. 031 520745 - fax 031 507194

sito web: <http://www.davinciripamonti.gov.it>



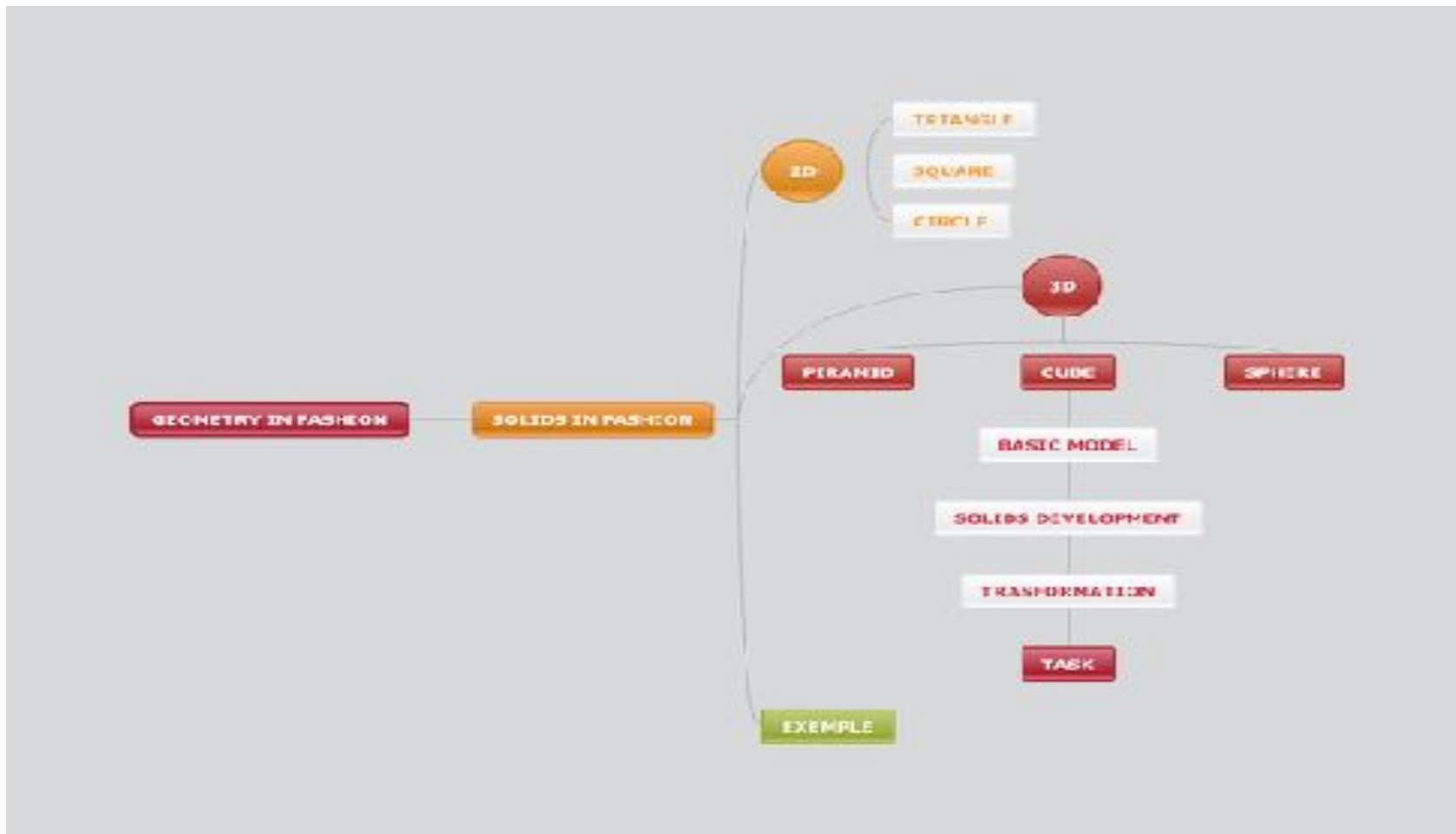
AS. 2017/2018

CORSO OPERATORE DI ABBIGLIAMENTO E SARTORIA

DOCENTE: STEFANIA COLOSIMO

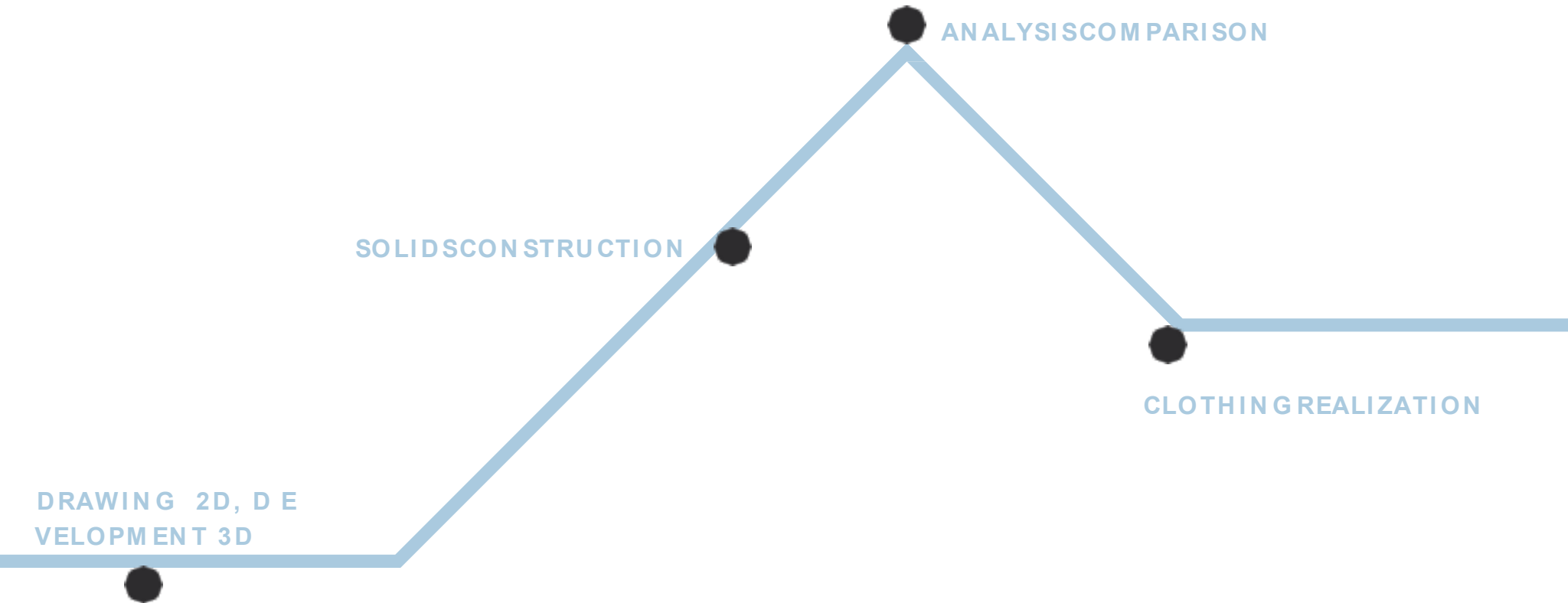
CLASSI 1[^]/2[^]

MAP



SOLDS

IN FASHION



THEME

**THESE DRESSED WOULD NOT BE WORN IN EVERYDAY LIFE,
BUT DEMONSTRATES THE CONCEPT OF GEOMETRICALLY ARRANGED FIGURES IN
RELATION TO THE HUMAN BODY.**

**FASHION REGARDLESS OF WHAT A PERSON IS
BASED ON GEOMETRY.**

QUESTI VESTITI NON VERRANNO UTILIZZATI NELLA VITA QUOTIDIANA, MA DIMOSTRANTI IL
CONCETTO DI FIGURE GEOMETRICHE SOSTENUTE IN RELAZIONE AL CORPO UMANO.
LA MODA INDIPENDENTEMENTE DI QUALE UNA PERSONA È BASATA SULLA GEOMETRIA.

FOURc

CONTENT

KNOWING SOLIDS
GEOMETRIES AND
LINES TO MAKE A
DRESS.

COMMUNICATION

HOW CAN I MAKE A
DRESS?

HOW CAN I DRAW
AND PLAN A
MODEL?

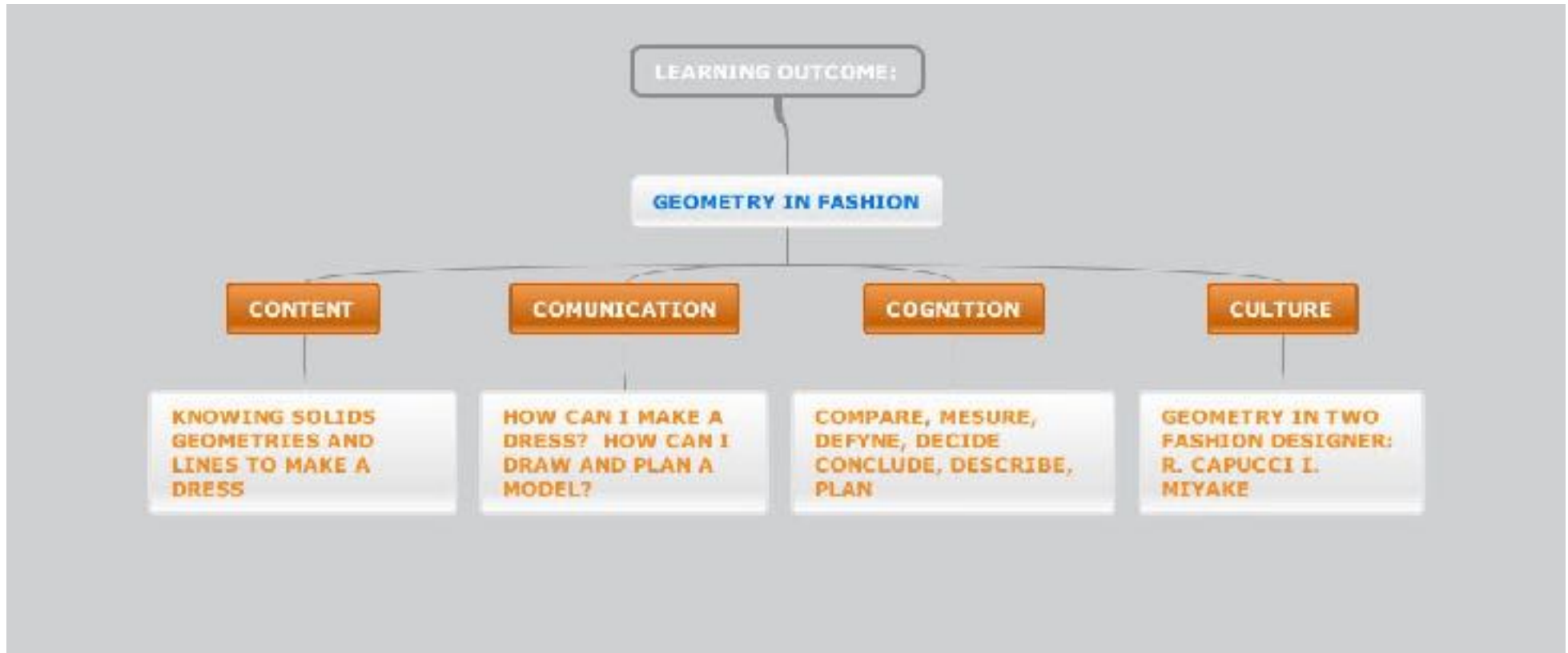
COGNITION

COMPARE, MEASURE,
DEFYNE, DECIDE
CONCLUDE,
DESCRIBE, PLAN

CULTURE

GEOMETRY IN TWO
FASHION DESIGNER:
R. CAPUCCI
I. MIYAKE

LESSON PLAN



LESSON PLAN

CLIL Lesson Plan- MODULE: GEOMETRY IN FASHION

Date: OTTOBRE 2017

Class: 1/2ª MODA

Title of Lesson	FROM GEOMETRICAL SHAPES TO SOLIDS DEVELOPING	Lesson 1 of 6 Total hours: 4
Topic or Main Idea	GEOMETRY AND FASHION	
Objectives	Draw geometric flat figures and develop solids.	
Content Language	Vocabulary: plan, base, flat figures, solid, pyramid, cube, cone, parallel, perpendicular,	Structures: with a flat figures I can do it..... I can build....., I can cut it....
Activity	Starting Point: Draw flat figures.	Core Activities: Draw and develop.
Worksheet	W1, W2	
Resources	https://youtu.be/vZ8Ay1xgpPU?list=PLXNle9D85y0tdRt-QuVMEeDwoiLW56k https://youtu.be/5NLIqL4Dmc78t-PLXNle9D85y0tdRt-QuVMEeDwoiLW56k https://youtu.be/4M9QghYHxvGAT?list=PLXNle9D85y0tdRt-QuVMEeDwoiLW56k	

CLIL Lesson Plan- MODULE: GEOMETRY IN FASHION

Date: OTTOBRE 2017

Class: 1/2^ MODA

Title of Lesson	FROM GEOMETRICAL SHAPES TO SOLIDS DEVELOPING	Lesson 1 of 6 Total hours: 4
Topic or Main Idea	GEOMETRY AND FASHION	
Objectives	Draw geometric flat figures and develop solids.	
Content Lan- guage	Vocabulary: plan, base, face, flat figures, width, dept, height, solid, pyramid, cube, cone, parallel, perpendicular....	Structures: with a flat figures I can do it..... I can build....., I can cut it....
Activity	Starting Point: Draw flat figures.	Core Activities: - The teacher introduces the topic Draw and develop.
Worksheet	W1, W2	
Resources	https://youtu.be/uZ8Jy1xgqPU?list=PLKNle9DB5yiXdRH-QxVMEeIDMoiLM5t6k http://www.shmoop.com/basic-geometry/three-d-prisms-cylinders-cones-spheres.html http://study.com/academy/lesson/solid-figures-definition-properties-examples.html https://youtu.be/5NJ-iqC6DMc?list=PLKNle9DB5yiXdRH-QxVMEeIDMoiLM5t6k https://youtu.be/M9QghVNqxA?list=PLKNle9DB5yiXdRH-QxVMEeIDMoiLM5t6k	

CLIL Lesson Plan- MODULE: GEOMETRY IN FASHION

Date: OTTOBRE 2017

Class: 1/2^ MODA

Title of Lesson	SOLIDS CONSTRUCTION STARTING FROM FLAT FIGURES	Lesson 2 of 6 Total hours: 3
Topic or Main Idea	GEOMETRY AND FASHION	
Objectives	Build solids	
Content Language	Vocabulary: flat figures, triangle, square, circle, solid, pyramid, cube, cone, parallel, perpendicular....	Structures: with a flat figures I can; with a triangle, square, circle I do it..... I can build....., I can cut it....
Activity	Starting Point: Draw and develop flat figures.	Core Activities: Build solids.
Worksheet	W1, W2	
Resources		

CLIL Lesson Plan- MODULE: GEOMETRY IN FASHION

Date: OTTOBRE 2017

Class: 1/2^ MODA

Title of Lesson	OBSERVATION AND COMPARISON OF SOLIDS WITH THE BODY	Lesson 3 of 6 Total hours: 3
Topic or Main Idea	GEOMETRY AND FASHION	
Objectives	Evaluate body and geometry.	
Content Lan- guage	Vocabulary: solid, pyramid, cube, cone, parallel, perpendicular,	Structures: with pyramid I can do it..... I can build....., I can cut it....
Activity	Starting Point: Observe.	Core Activities: Compare, locate and place.
Worksheet	W1, W2	
Resources	power point, www.youtube....	

CLIL Lesson Plan- MODULE: GEOMETRY IN FASHION

Date: OTTOBRE 2017

Class: 1/2^ MODA

Title of Lesson	OBSERVATION AND COMPARISON OF SOLIDS WITH DRESS PATTERNS	Lesson 4 of 6 Total hours: 3
Topic or Main Idea	GEOMETRY AND FASHION	
Objectives	Analyze solids and clothes made.	
Content Lan- guage	Vocabulary: solid, pyramid, cube, cone, parallel, perpendicular, textiles, materials...	Structures: with this fabric, materials I can; I can build.....; I can cut it....; This solid....
Activity	Starting Point: Observe.	Core Activities: Compare, locate, recognize and interpret.
Worksheet	W1, W2	
Resources	power point, www.youtube....	

CLIL Lesson Plan- MODULE: GEOMETRY IN FASHION

Date: OTTOBRE 2017

Class: 1/2^ MODA

Title of Lesson	AS THE STUDY OF SOLIDS FACILITATES THE DEVELOPMENT OF DRESS PATTERNS	Lesson 5 of 6 Total hours: 3
Topic or Main Idea	GEOMETRY AND FASHION	
Objectives	Analyze solids and clothes made.	
Content Language	Vocabulary: solid, pyramid, cube, cone, parallel, perpendicular, textiles, materials...	Structures: with this fabric, materials I can; I can build.....; I can cut it....; This solid....
Activity	Starting Point: Observe, analyze and verify.	Core Activities: Apply development to the model.
Worksheet	W1, W2	
Resources	power point, www.youtube....	

CLIL Lesson Plan- MODULE: GEOMETRY IN FASHION

Date: OTTOBRE 2017

Class: 1/2^ MODA

Title of Lesson	DEVELOPA MODEL STARTING FROM A SOLID	Lesson 6 of 6 Total hours: 4
Topic or Main Idea	GEOMETRY AND FASHION	
Objectives	To get a piece of clothing.	
Content Language	Vocabulary: solid, pyramid, cube, cone, parallel, perpendicular, textiles, materials, forms, volumes..	Structures: with this fabric, materials I can; I can build.....; I can cut it....; This solid can become...
Activity	Starting Point: Identify and develop.	Core Activities: Apply development of a solid to the model.
Worksheet	W1, W2	
Resources	power point, www.youtube....	

EXAMPLE

01

ROBERTO CAPUCCI



02

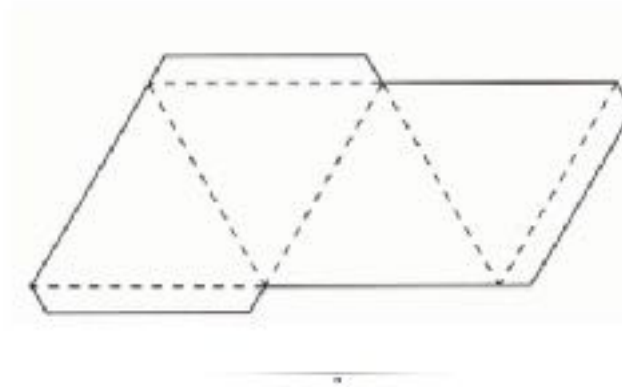
ISSEY MIYAKE



TASK

ACTIVITY

MATCHING, PRACTISE.... (pdf)



**MATCHING:
INSERT THE GIVEN IMAGE IN THE RIGHT COLUMN**

INSTRUCTIONS:

TWO POSTERS ARE HANGING ON THE WALLS, SOLID IMAGES, FLAT FIGURES, AND GEOMETRIC FIGURES ARE HUNG CLOSE TO THE POSTERS.

THE STUDENTS FORM TWO WORKING GROUPS

IN A GIVEN TIME, THEY MUST MATCH THE FIGURES TO THE LIST READING ALOUD WITH THE NAME OF THE IMAGE.

WINS THE GROUP THAT COMPLETES THE LIST BY NAME AND IMAGE

DUE POSTER SONO APPESI ALLE PARETI, IMMAGINI SOLIDE, FIGURE PIATTE E FIGURE GEOMETRICHE SONO APPESE VICINO AI MANIFESTI.

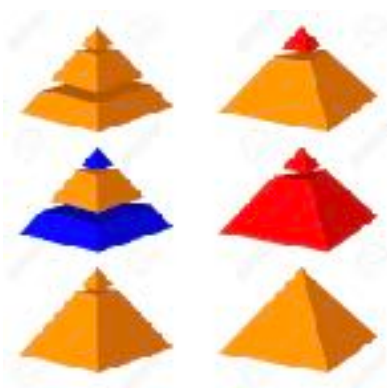
GLI STUDENTI FORMANO DUE GRUPPI DI LAVORO

IN UN TEMPO DATO, ESEMPIO 10 MINUTI, DEVONO ABBINARE LE FIGURE ALLA LISTA LEGGENDO AD ALTA VOCE IL NOME DELL'IMMAGINE.

VINCE IL GRUPPO CHE COMPLETA LA LISTA PER NOME E IMMAGINE

**MATCHING:
INSERT THE GIVEN IMAGE IN THE RIGHT COLUMN**

SOLID	FLAT GEOMETRIC FIGURES




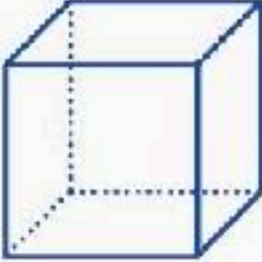


MATCHING:
CREARE CON I SOLIDI UN IDEA DI ABITO

Formare due squadre, creare con i solidi un abito su manichino in 20 minuti, vince chi crea un abito nel tempo dato. Si vince un taglio di tessuto.



ONE FIN IT TO FES

<p>TRIANGULAR PYRAMID</p>	<ul style="list-style-type: none"> - A PYRAMID WITH A TRIANGULAR BASE - A PYRAMID WITH A TRIANGULAR BASE OF FOUR EQUILATERAL TRIANGLES IS CALLED A REGULAR TETRAHEDRON. 	
<p>SQUARE PYRAMID</p>	<ul style="list-style-type: none"> - A PYRAMID WITH A SQUARE BASE 	
<p>CONE</p>	<ul style="list-style-type: none"> - A SOLID WITH A CIRCULAR BASE AND A CURVED SIDE THAT ENDS IN ONE POINT. - IT HAS ONLY THREE. 	
<p>CUBE</p>	<ul style="list-style-type: none"> - A PRISM WITH SIX IDENTICAL FACES - ALL FACES MEET AT 90-DEGREE ANGLES. - OPPOSITE FACES ARE PARALLEL. - IT IS A FORM OF RECTANGULAR PRISM 	

CLOZE WITH PICTURES

_____ :



A FLAT SIDE OF A 3-DIMENSIONAL OBJECT.

_____ :



ONE OF TWO PARALLEL, CONGRUENT SIDES OF AN OBJECT.

_____ :



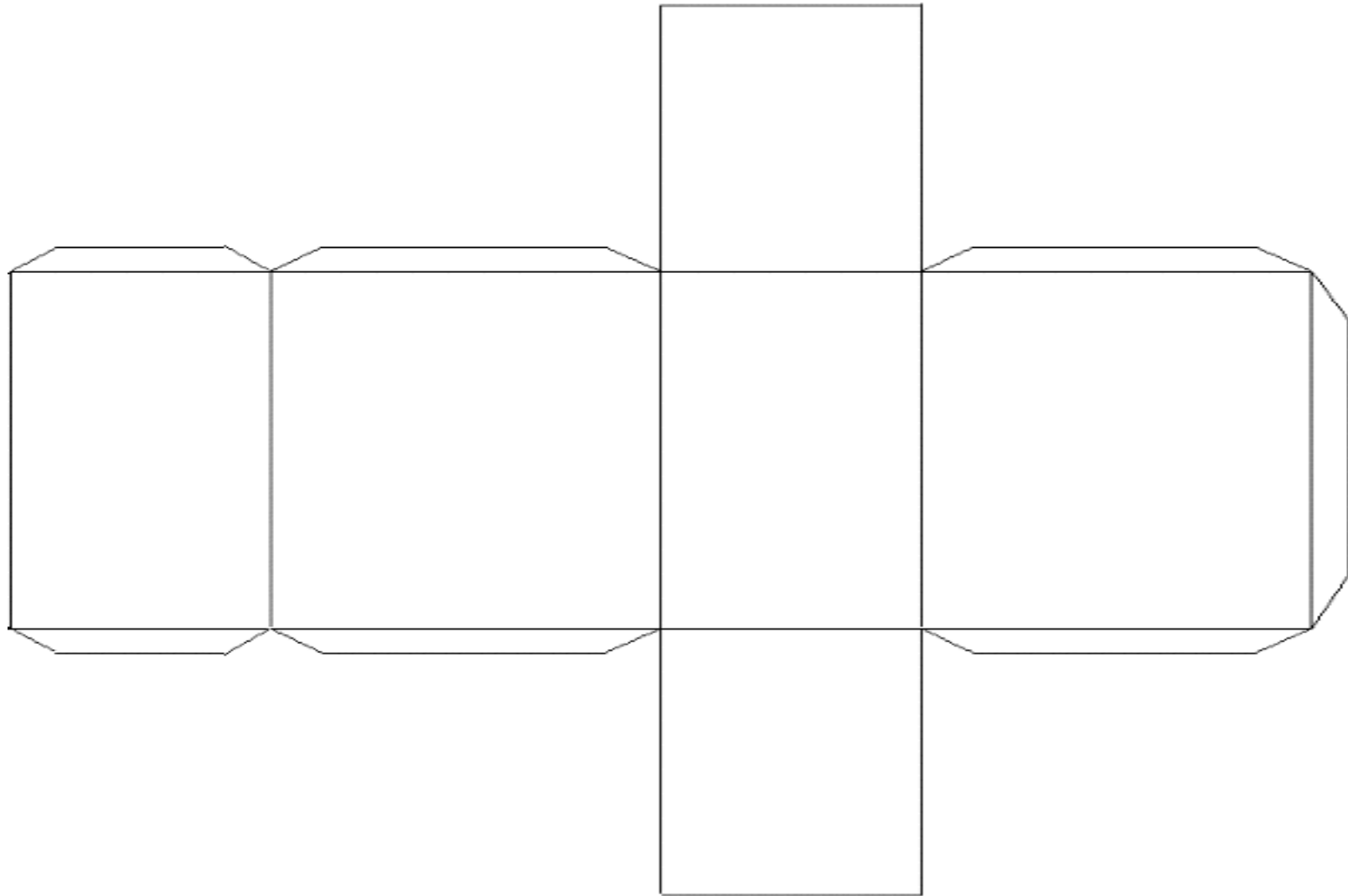
THE INTERSECTION OF TWO FACES ON A SOLID OBJECT. THIS IS A LINE.

_____ : A SOLID OBJECT WITH A POLYGON FOR A BASE AND



_____ FOR SIDES.

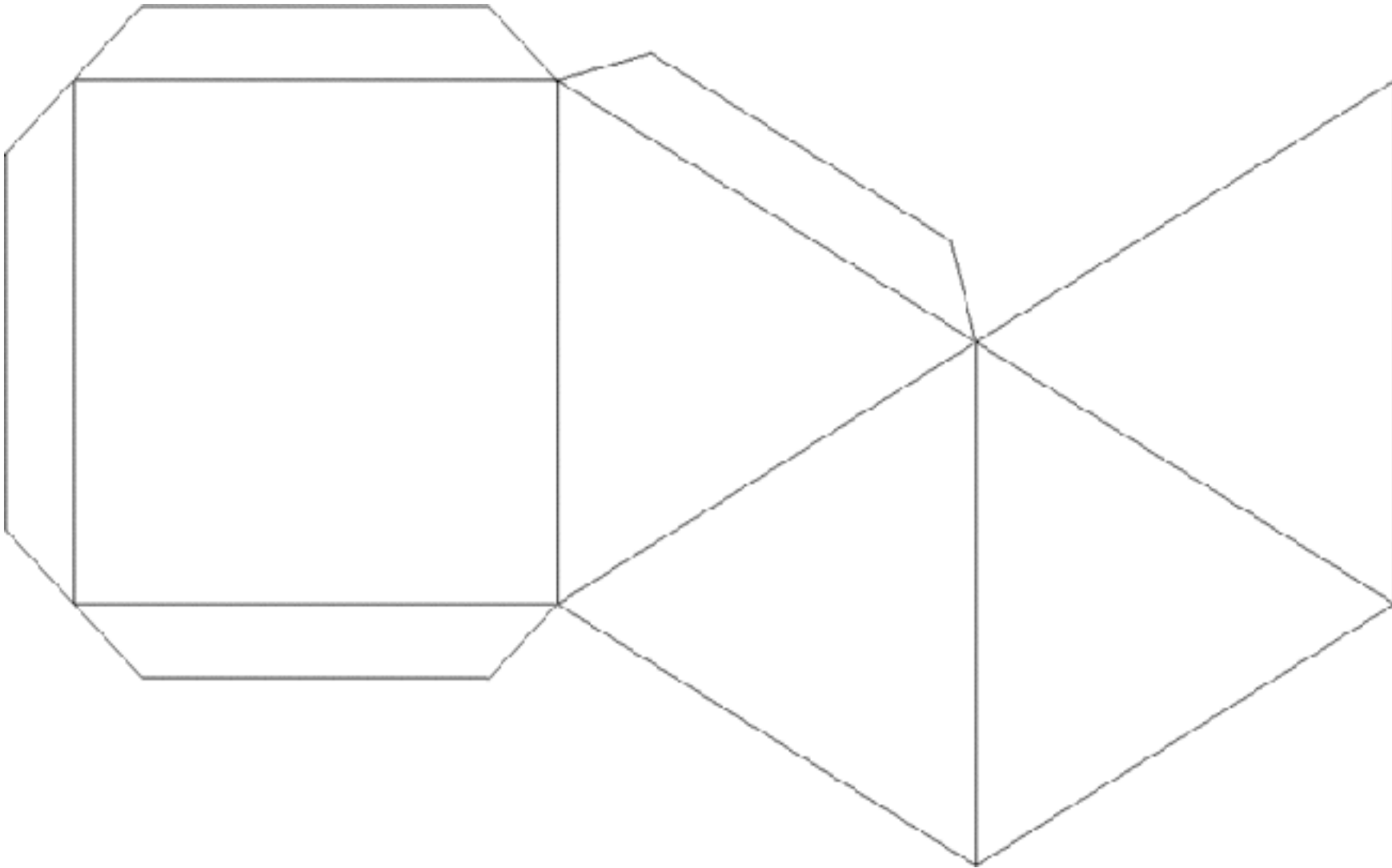
Parallelepipedo Rettan



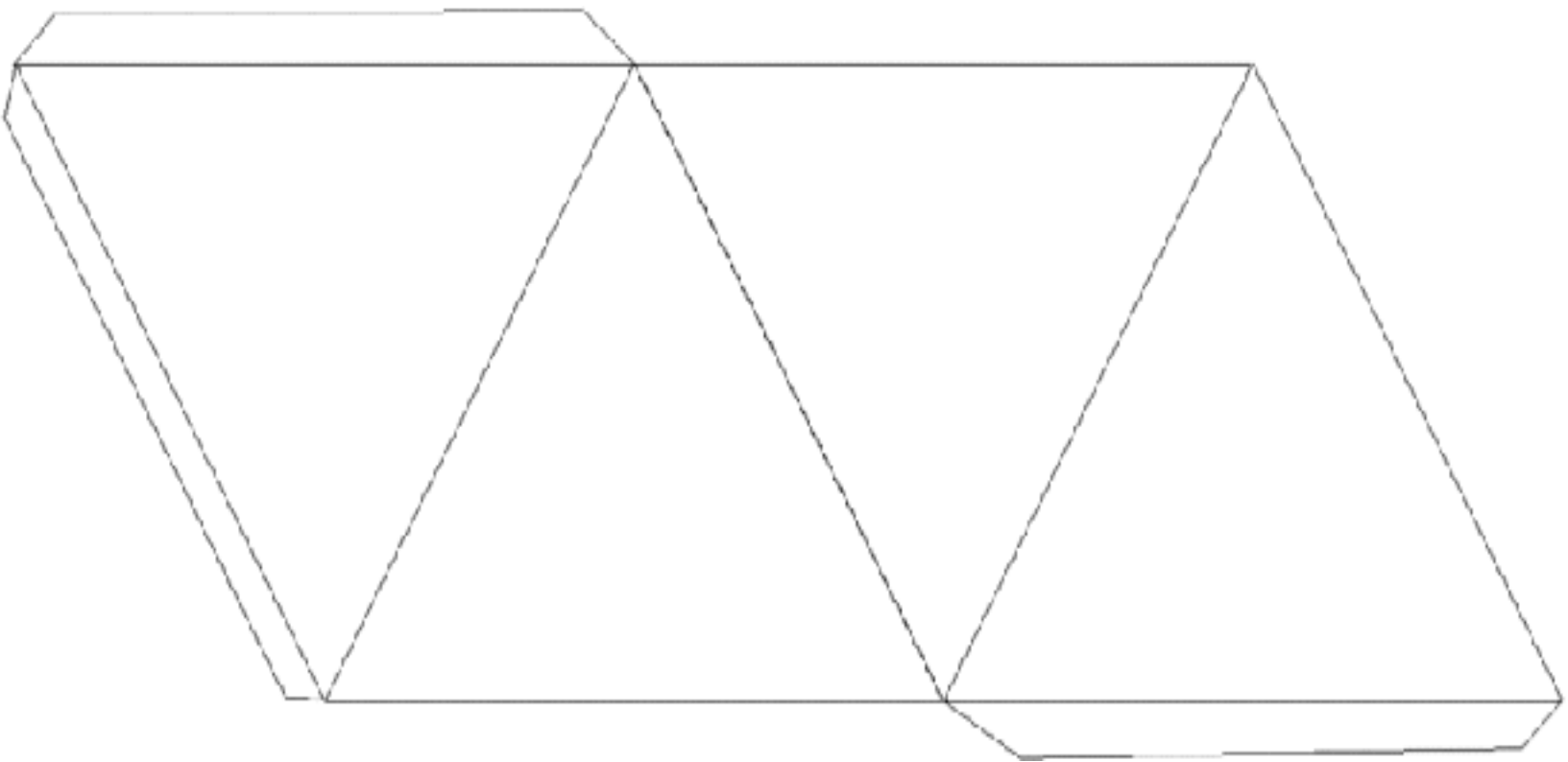
Cilindro



Piramide

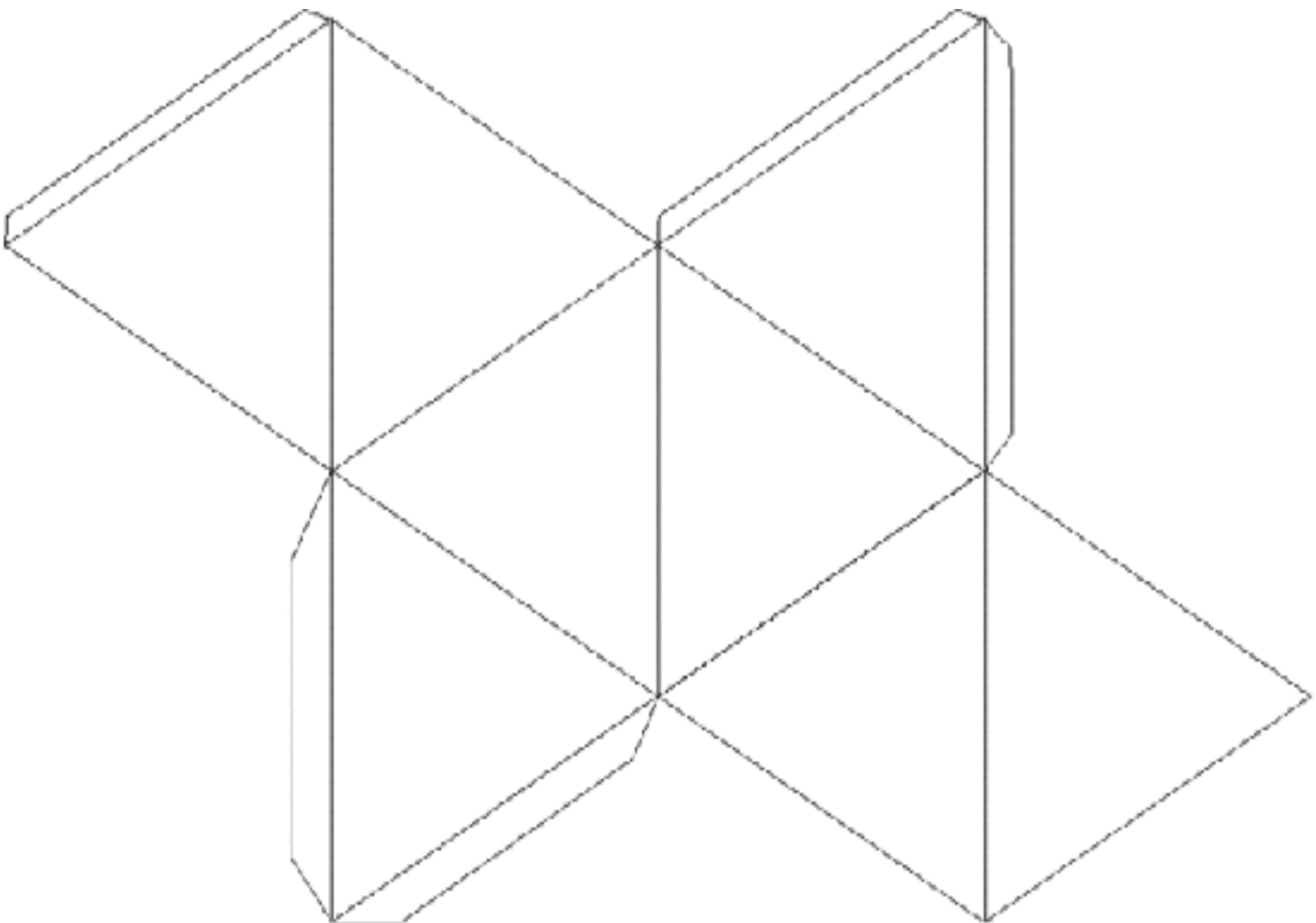


Tetraedro



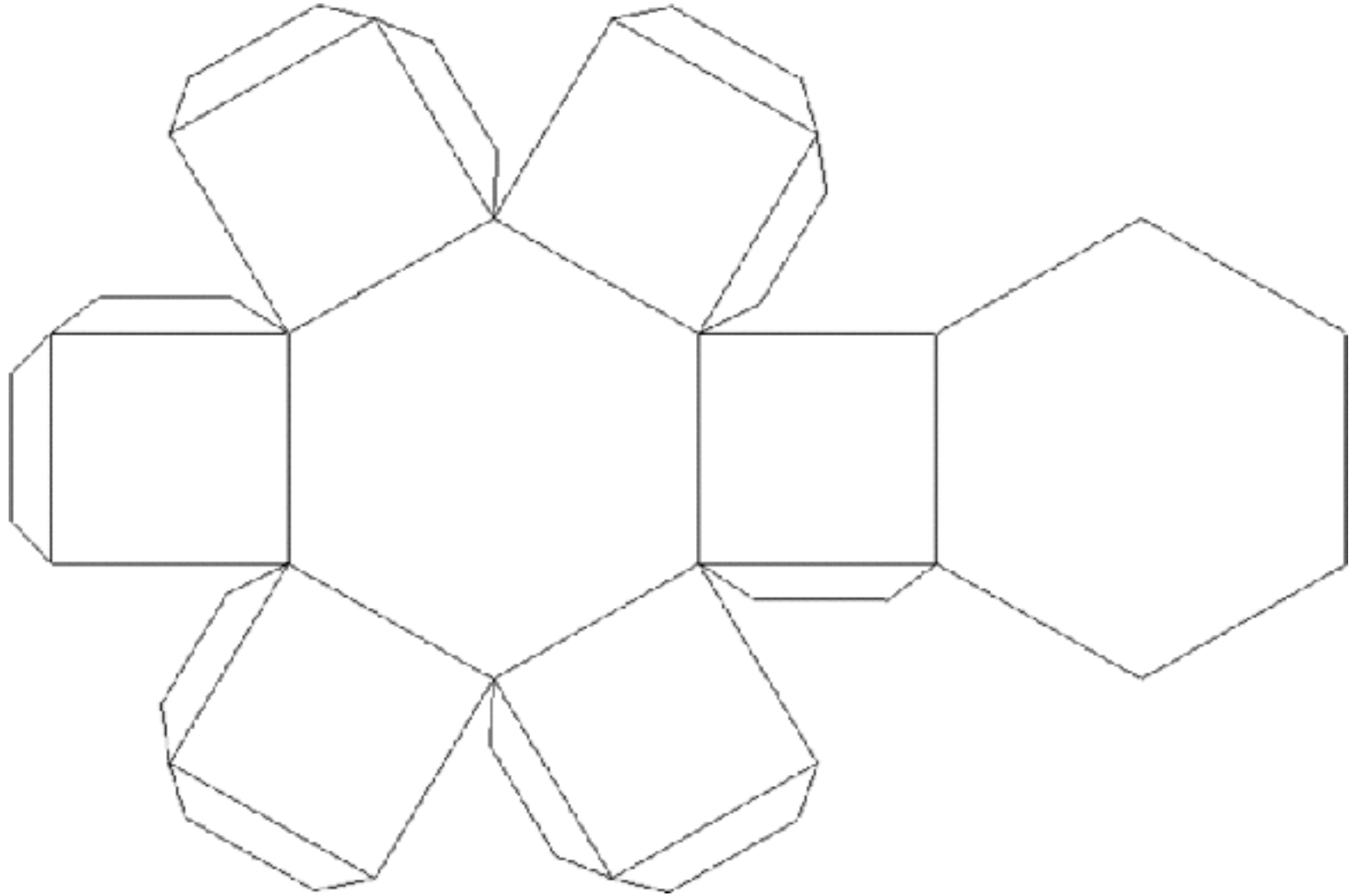
© Pianetabambini.it

Ottaedro

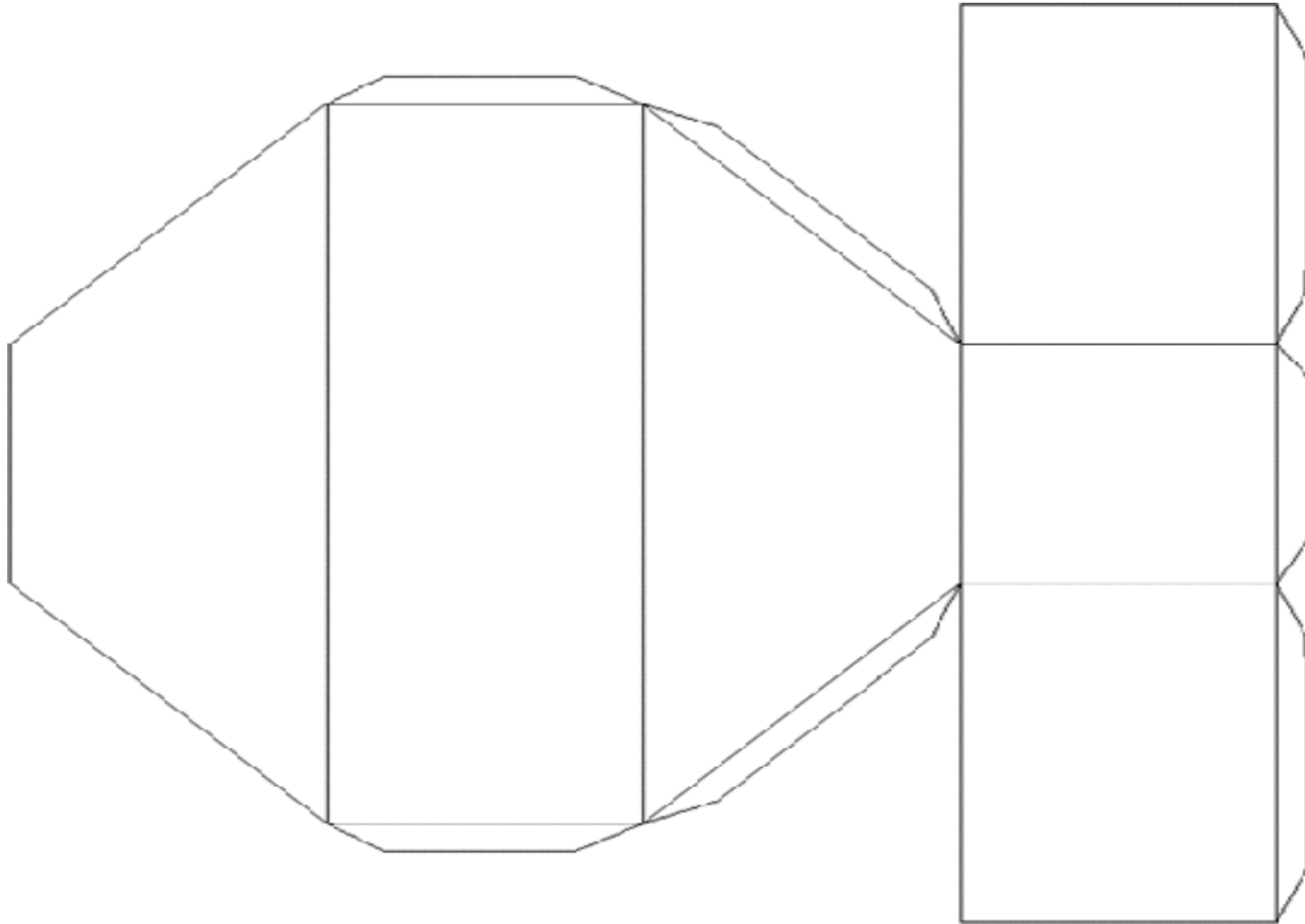


© Pianetabambini.it

Prisma Esagonale



Prisma Trapezoidale



RESOURCES

<http://futurefashion.altervista.org/page/2/>

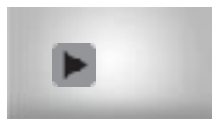
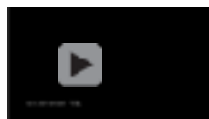
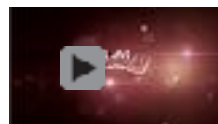
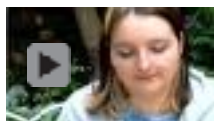
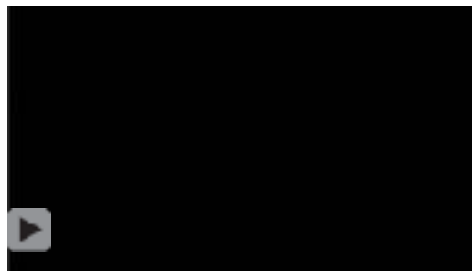
<https://www.dezeen.com/2010/11/23/platos-collection-by-amila-hrustic/>

<https://issuu.com/danielladourada/docs/>

[matem_tica_amila_hrustic_s_lidos_](#)

https://issuu.com/jeanneang/docs/m4_reflection

VIDEOS



SECRET OF A FAN GIRL

A.S. 2017/18

THANK YOU
SO MUCH!



SEPTEMBER 2017